

PART OF N.W. 1/4, SEC. 20, T. 7N., R. 1W., S.L.B. & M.
MAJESTIC HEIGHTS SUBDIVISION NO. 8
 IN CITY OF PLEASANT VIEW

102

TAXING UNIT: 11

PREFIX: 16-102

LOTS 155-167

SCALE = 1" = 60'

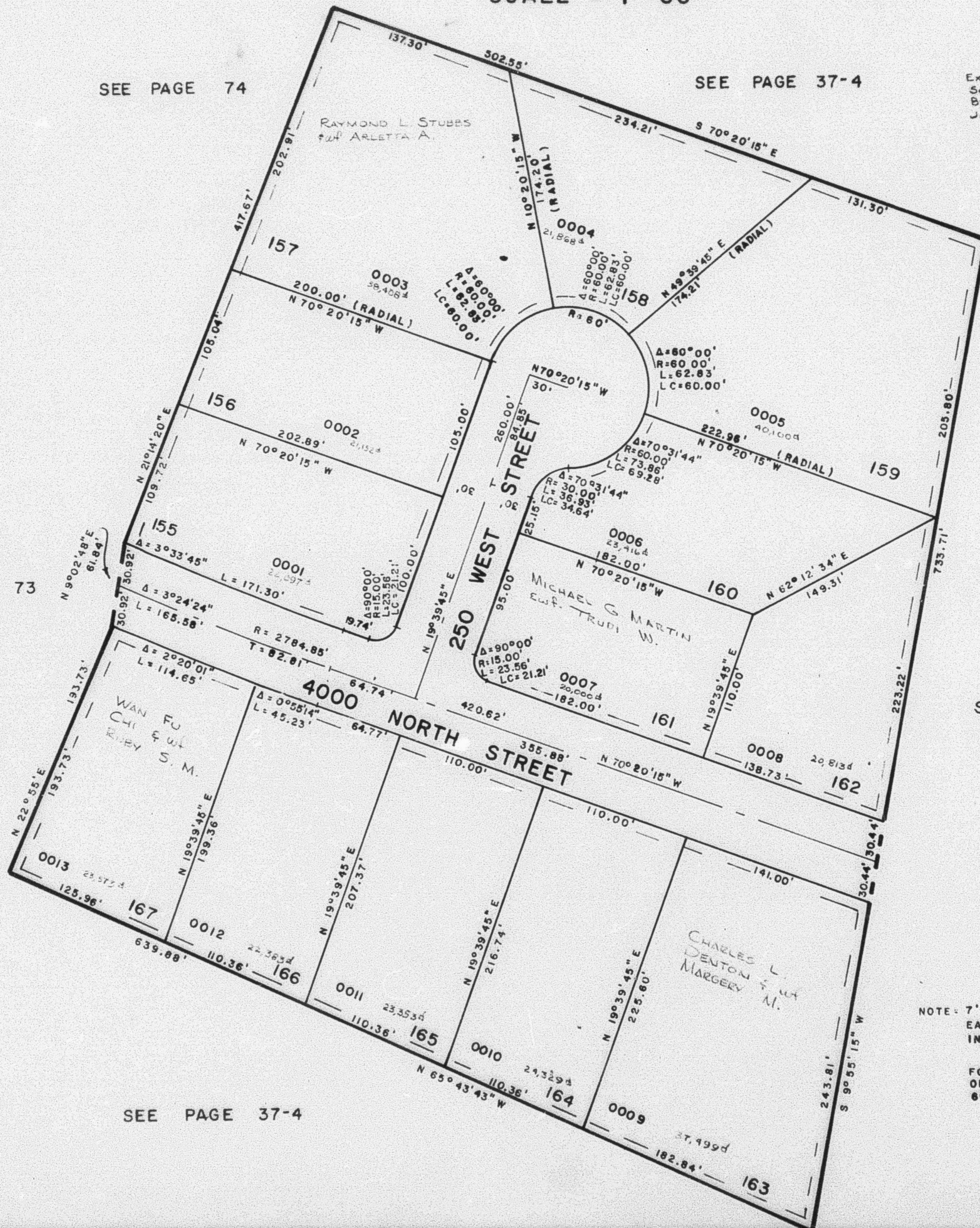
SEE PAGE 74

SEE PAGE 37-4

EXCEPT WHERE OTHERWISE
 SHOWN ALL LOTS OWNED
 BY V. JAY WADMAN & WIFE
 JUNE C.

SEE PAGE 73

SEE PAGE 37-4



SEE PAGE 37-4

NOTE: 7' UTILITY AND DRAINAGE EASEMENT
 EACH SIDE OF PROPERTY LINE AS
 INDICATED BY DASHED LINES.

FOR COMPLETE ENCL. DATA SEE
 ORIG. DED. PLAT IN BOOK 21, PAGE
 60.

REC 6-28-78
 DRN 7-78 A.M.